

# **Gcube-102 Linux Driver Install Guide.**

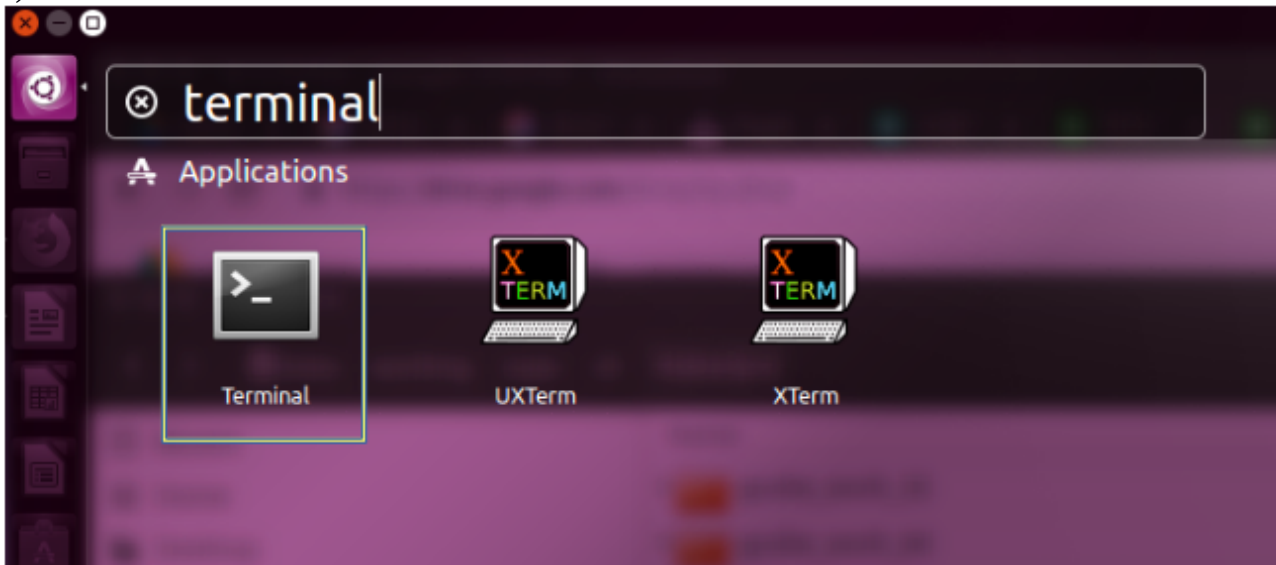
Version : 1.0  
Os : Ubuntu 16.04 64bit/32bit

## **Index**

- 1. Serial Connection.**
- 2. USB to Serial Connection .**
- 3. USB Connection.**
- 4. Ethernet Connection.**

## 1. Serial Connection.

1) It must be run on terminal and root account.



- run terminal.  
- type : `~# sudo -s`

2) Printer set to serial interface mode.

3) Connect Serial cable with printer and power the printer on.

4) Make sure cable and printer is powerd on.

5) run `./cli_installer_gcube102_64bit` on terminal.

```
root@shc-EIBM-SAM: ~/Downloads/g
File Edit View Search Terminal Help
=====
Select Interface

1) Serial
2) USB to Serial
3) USB
4) Ethernet

0) Exit
=====
Your select:█
```

6) Select “1) Serial”.

7) The serial port on your pc will be detected automatically.

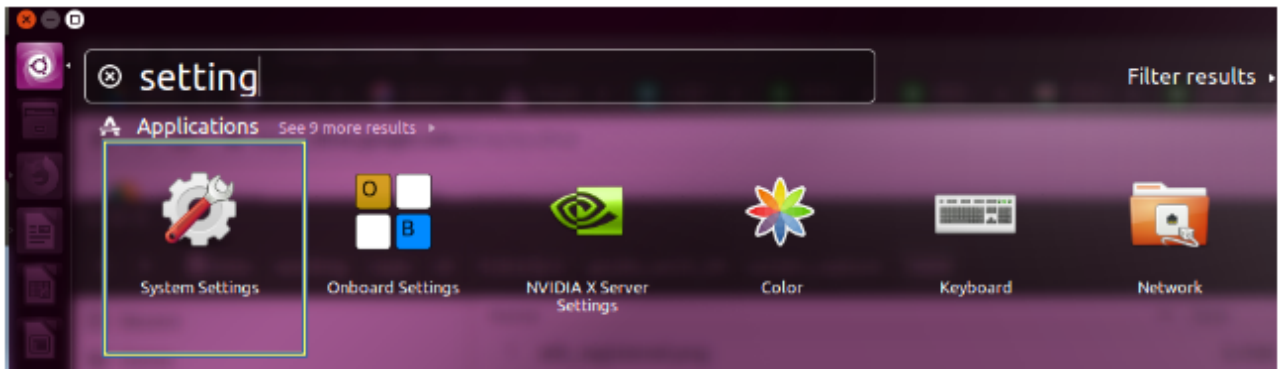
```
=====
Serial Install Selected
=====
Check port -----> /dev/ttyS0
check_port_ttyUSB(/dev/ttyS0)Check /dev/ttyS0...
[/dev/ttyS0]Result=255
Check port -----> /dev/ttyS1
check_port_ttyUSB(/dev/ttyS1)Check /dev/ttyS1...
[/dev/ttyS1]Result=255
Check port -----> /dev/ttyS2
check_port_ttyUSB(/dev/ttyS2)Check /dev/ttyS2...
Rcv=0x12
Printer Detected!!
```

8) Select configuration of your serial port.

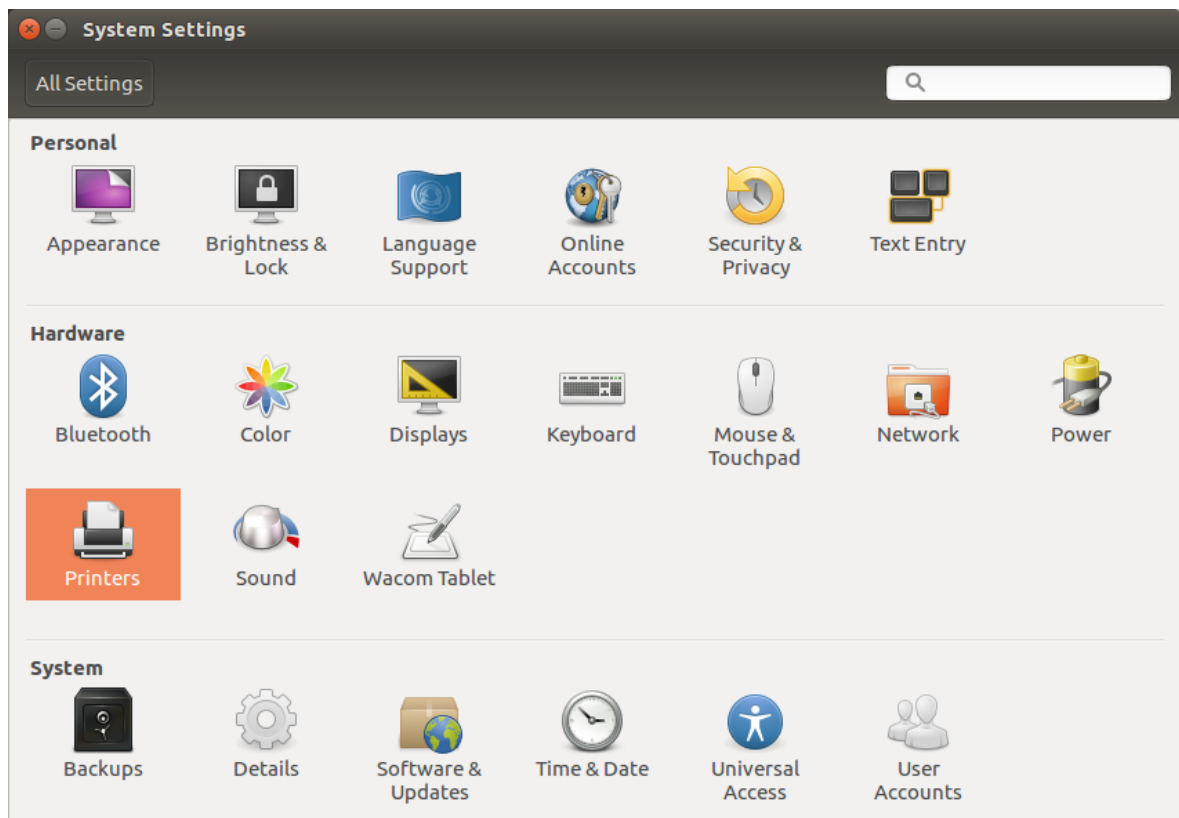
```
=====
Select Baud rate : 1)115200  2)57600  3)38400
Select Baud rate : 4)19200  5)14400  6)9600
Select Baud rate : 7)4800   8)2400
Defult is 1)115200 .
=====
Your select(Defult:115200):
1
=====
Select Flow control : 1)HW(RTS/CTS)  2)SW(XON/XOFF)
=====
Your select(Defult:HW(RTS/CTS)):1
=====
Select Stopbit : 1)8bit  2)7bit
=====
Your select(Defult:8bit):1
=====
Select Use Parity : 1)None  2)Even  3)Odd
=====
Your select(Defult:None):1
```

9) Done.

10) Open setting panel.



11) Select “Printers” on setting panel menu.



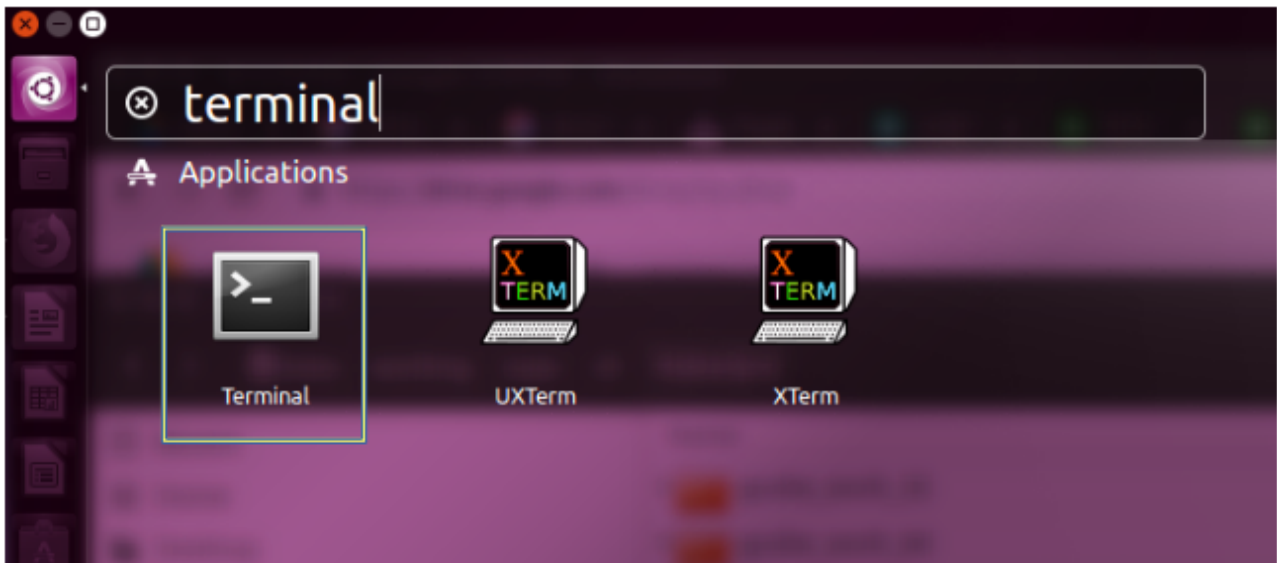
12) You can see your printer.



SAM4s\_gcube-102\_SERIAL

## 2. USB to Serial Connection.

1) It must be run on terminal and root account.



- run terminal.
- type : `~# sudo -s`

2) Printer set to serial interface mode.

3) Connect USB-to-Serial cable with printer and power the printer on.

4) Make sure cable and printer is powerd on.

5) run `./cli_installer_gcube102_64bit` on terminal.

```
=====
Select Interface

1) Serial
2) USB to Serial
3) USB
4) Ethernet

0) Exit
=====
Your select:2
```

6) Select “2) USB to Serial”.

7) The serial port on your pc will be detected automatically.

```
=====
USB to RS232 Install Selected
=====

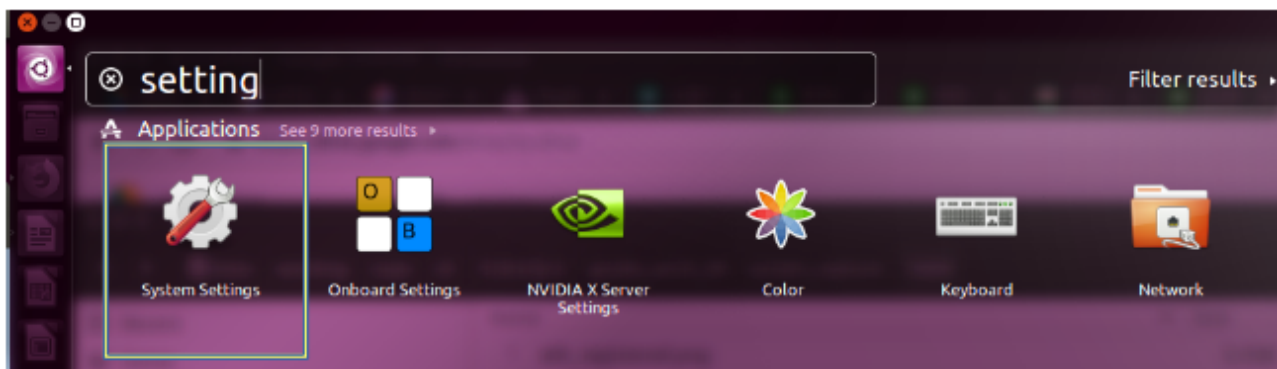
Check port ----> /dev/ttyUSB0
check_port_ttyUSB(/dev/ttyUSB0)Check /dev/ttyUSB0...
Rcv=0x12
Printer Detected!!
[/dev/ttyUSB0]Result=1
Found RETAIL POS-150 on /dev/ttyUSB0
```

8) Select configuration of your serial port.

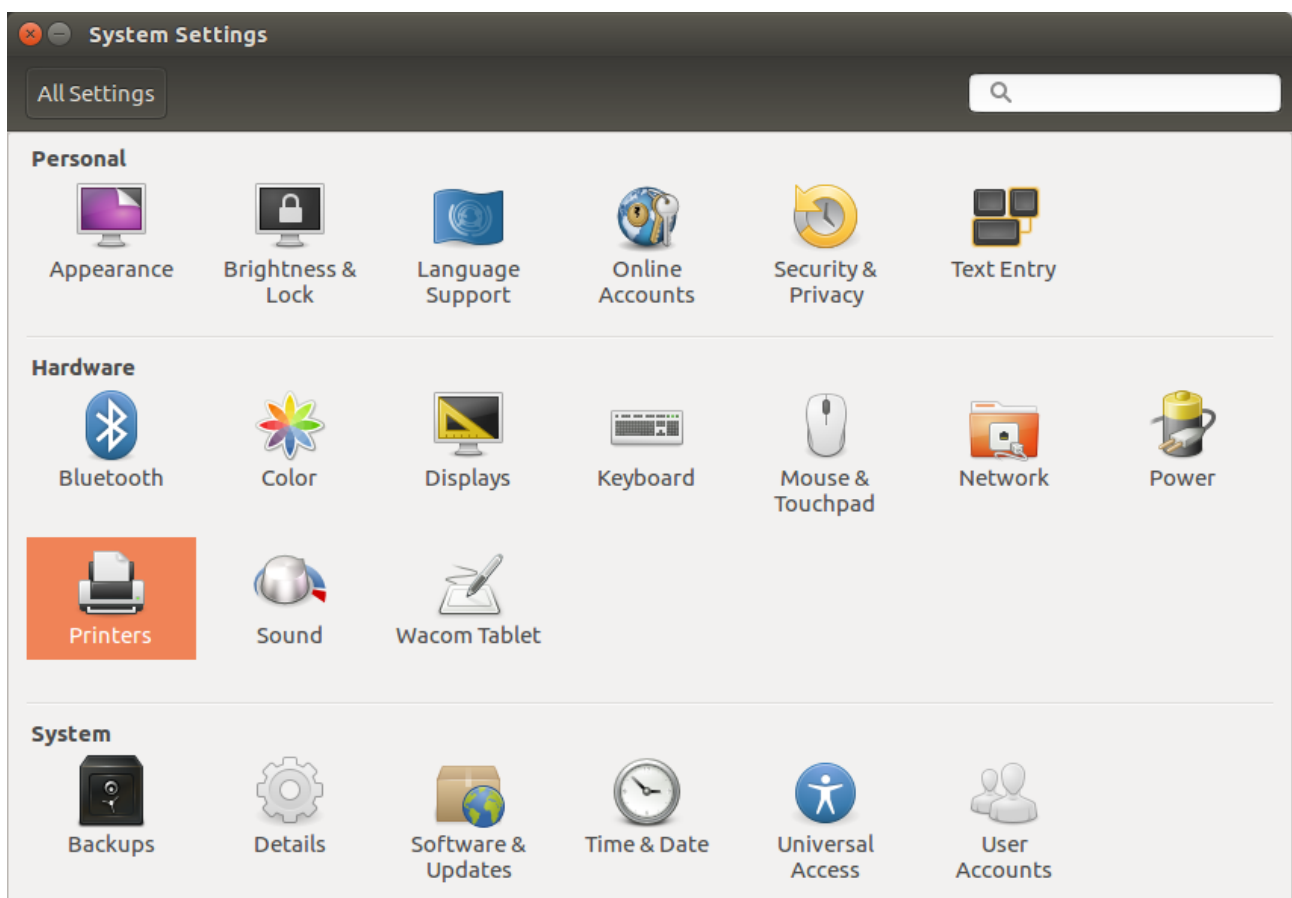
```
=====
Select Baud rate : 1)115200  2)57600  3)38400
Select Baud rate : 4)19200   5)14400  6)9600
Select Baud rate : 7)4800    8)2400
Default is 1)115200 .
=====
Your select(Default:115200):
1
=====
Select Flow control : 1)HW(RTS/CTS)  2)SW(XON/XOFF)
=====
Your select(Default:HW(RTS/CTS)):1
=====
Select Stopbit : 1)8bit  2)7bit
=====
Your select(Default:8bit):1
=====
Select Use Parity : 1)None  2)Even  3)Odd
=====
Your select(Default:None):1
```

9) Done.

10) Open setting panel.



11) Select “Printers” on setting panel menu.



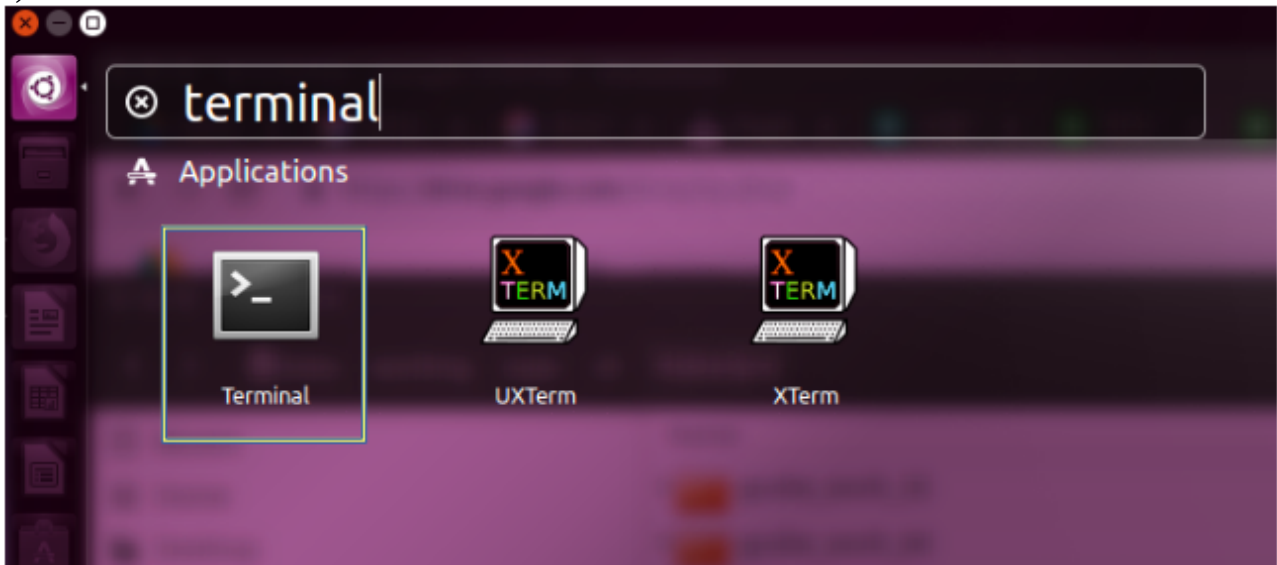
12) You can see your printer.



SAM4s\_gcube-102\_USB2SE  
RIAL

### 3. USB Connection.

1) It must be run on terminal and root account.



- run terminal.
- type : `~# sudo -s`

2) Printer set to USB interface mode.

3) Connect USB cable with printer and power the printer on.

4) Make sure cable and printer is powerd on.

5) run `./cli_installer_gcube102_64bit` on terminal.

```
=====
Select Interface

1) Serial
2) USB to Serial
3) USB
4) Ethernet

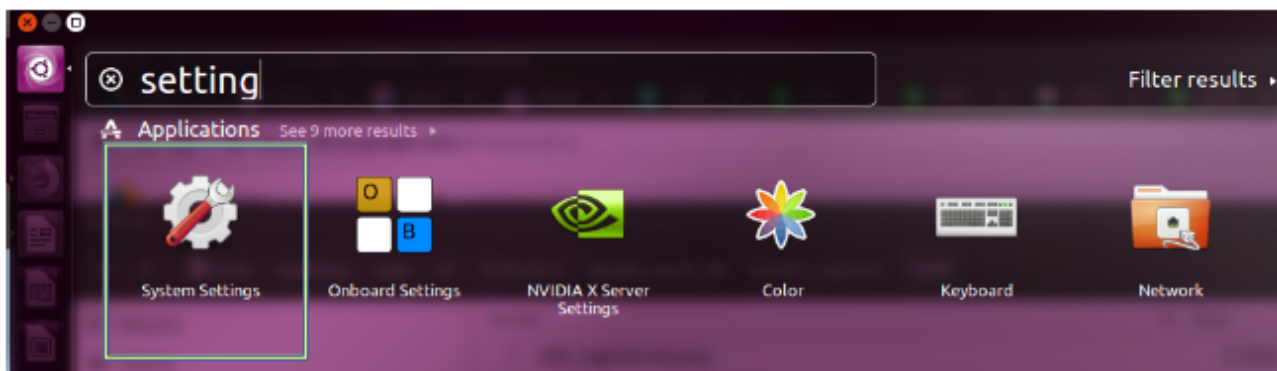
0) Exit
=====
Your select:3
```

6) Select “3) USB”.

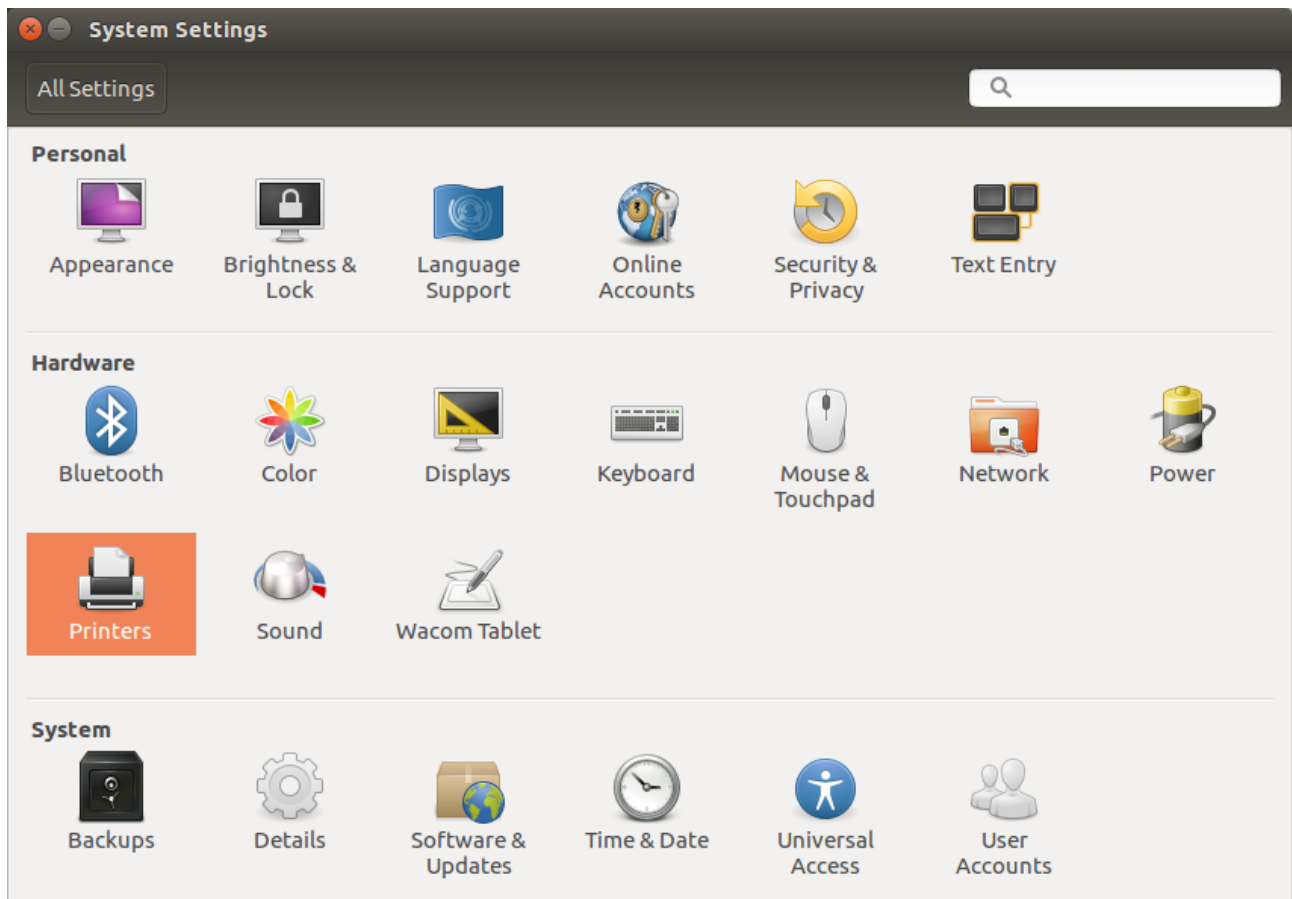
7) The USB port on your pc will be detected automatically.

8) Done.

9) Open setting pannel.



10) Select “Printers” on setting pannel menu.



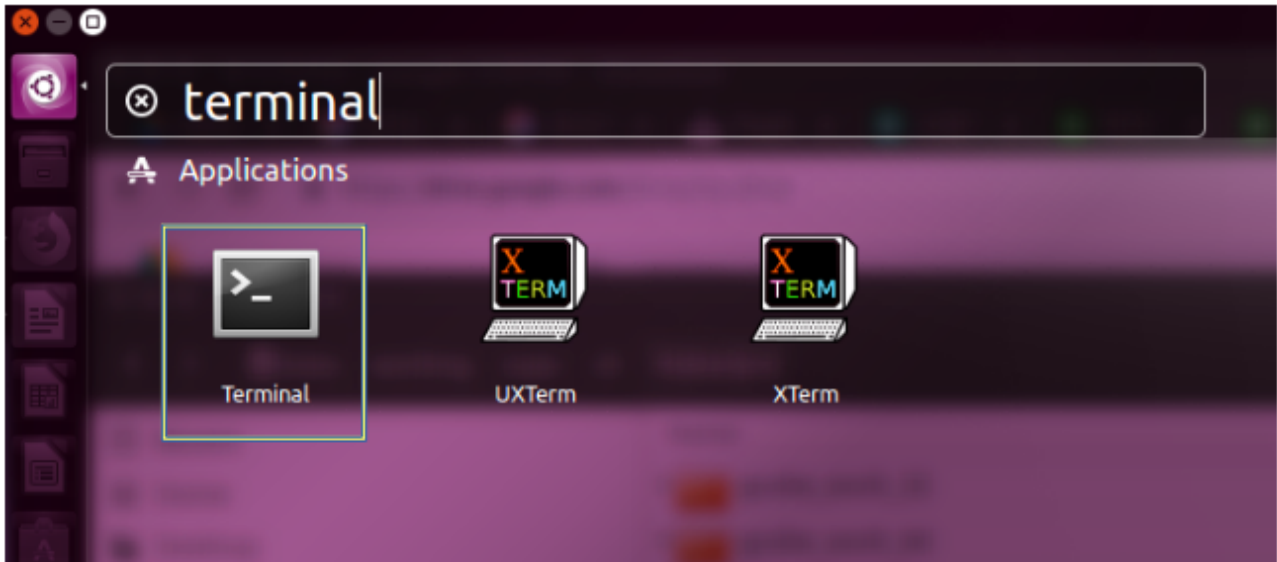
11) You can see your printer.



SAM4s\_gcube-102\_USB

## 4. Ethernet Connection.

1) It must be run on terminal and root account.



- run terminal.
- type : `~# sudo -s`

- 2) Printer set to Ethernet interface mode.
- 3) Connect LAN cable with printer and power the printer on.
- 4) You can check ip address to press [FEED]+Power on.
- 5) run `./cli_installer_gcube102_64bit` on terminal.

```
=====
Select Interface

1) Serial
2) USB to Serial
3) USB
4) Ethernet

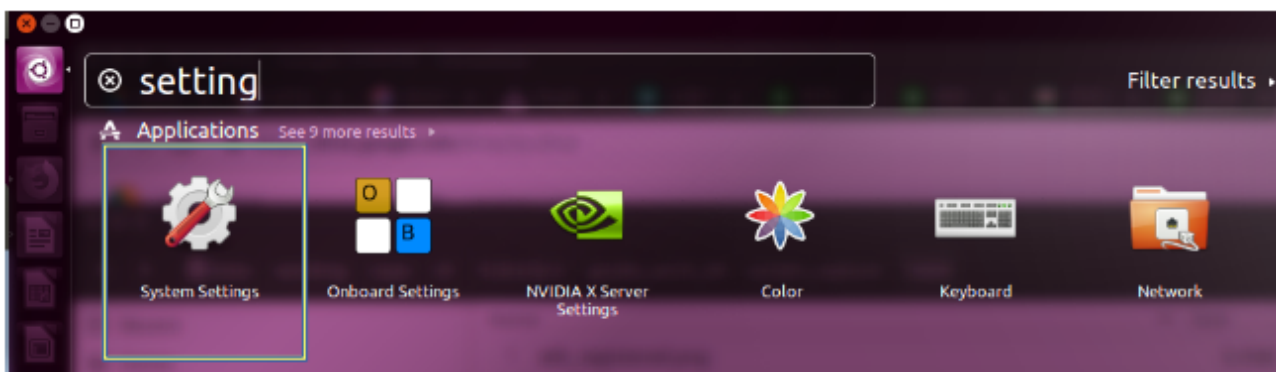
0) Exit
=====
Your select:4
```

6) Select “4) Ethernet”.

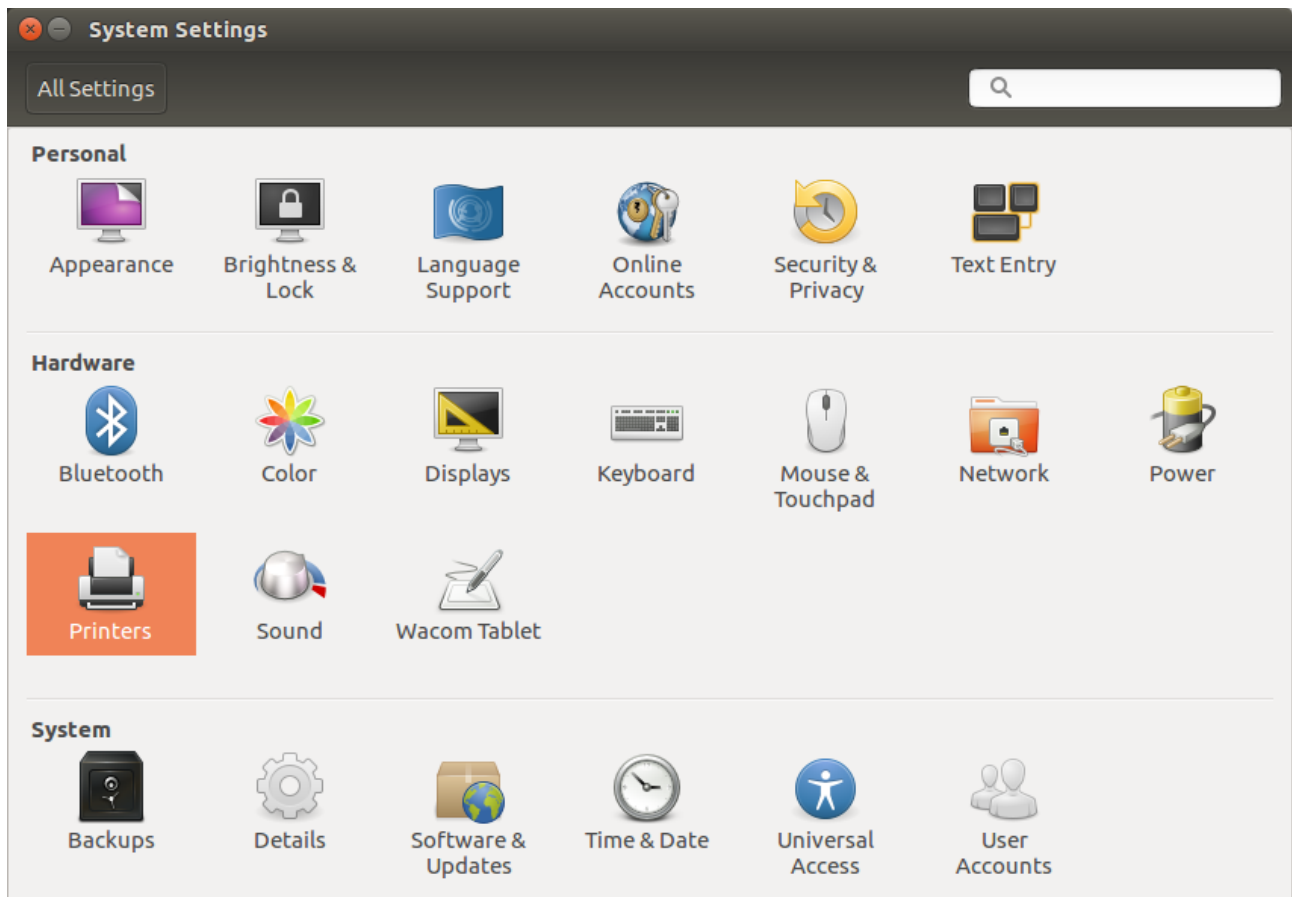
7) Enter IP Address and Port Number, Port Number might be 6001.

8) Done.

9) Open setting pannel.



10) Select “Printer” on setting pannel menu.



11) You can see your printer.



SAM4s\_gcube-102\_ETHERN  
ET

Thank you.